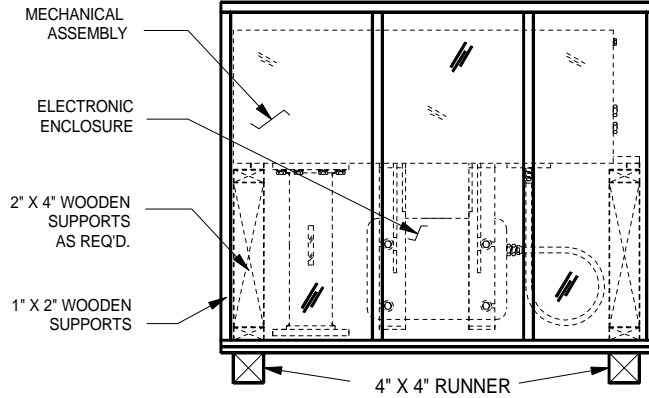


RFEA NO.	LTR	Description	Rev. By	Date	Appr.	Date

TYPICAL CONSTRUCTION

(MECHANICAL ASSEMBLY SHOWN)



APPROXIMATE WEIGHTS AND DIMENSIONS

MECH ASSY

51 x 34 x 48 H (130x87x122cm)
 Net 480 lbs (218kg)
 Gross 600lbs (273kg)

TANK INTERFACE

31 x 28 x 38 H (79x72x97cm)
 Net 190 lbs (87kg)
 Gross 240 lbs (109kg)

ELECTRONICS

38 x 22 x 21 H (97x56x54cm)
 Net 45 lbs (21kg)
 Gross 95 lbs (44kg)

STORAGE REQUIREMENTS

PACKAGING IS DESIGNED FOR INSIDE STORAGE BUT MAY BE KEPT OUTSIDE IN A COVERED AREA FOR A SHORT PERIOD. CRATES ARE MARKED WITH INTERNATIONAL SYMBOLS TO INDICATE PROPER HANDLING.

CRATE CONSTRUCTION

ALL ITEMS ARE SHIPPED IN WOODEN CRATES. THE CRATES ARE CONSTRUCTED FROM PLYWOOD USING 1" X 2" LUMBER FOR SUPPORT AT ALL CORNERS AND EDGES AS REQUIRED. ADDITIONAL 2" X 4" LUMBER IS USED AS REQUIRED FOR INTERNAL BRACING. THE BOTTOM OF THE CRATE IS 5/8" THICK PLYWOOD. THE TOP AND SIDES ARE 3/8" THICK PLYWOOD. ALL CRATES ARE BANNED WITH STEEL STRAPS.


PACKAGING

TOP OF TANK ASSEMBLIES:
 THE MECHANICAL ASSEMBLY IS PURGED WITH NITROGEN GAS AND SEALED.
 THE ELECTRONIC ENCLOSURE MOUNTED TO THE MECHANICAL ASSEMBLY IS PURGED WITH NITROGEN GAS AND HAS DESCICANT PLACED INSIDE THE COVER. THE COVER AND SHAFT ARE COATED WITH A PROTECTIVE GREASE TO HELP SEALING

PACKAGING

CONTROL ROOM ELECTRONICS / MANUALS:
 ALL ITEMS ARE SECURELY PACKED IN A CARDBOARD BOX AND THEN VACUUM-SEALED IN A PLASTIC BAG.

SPARE PARTS, IF ORDERED WITH THE SYSTEM ARE ALSO PACKED INSIDE A PLASTIC BAG AND VACUUM-SEALED.

 West Palm Beach Florida 33407	Material	Finish	Scale	Dwn.	SM	4-19-01
		32 $\sqrt{\quad}$	NONE	Appr.		
	Tolerance	Title				
.00 +/- .015 .000 +/- .005 Frac. +/- 1/16 Ang. +/- 1/2 Deg. Corners +/- .010	M6290 STANDARD PACKAGING SPECIFICATION					
	FSCM NO.	Size	Dwg. No.	Rev.	Sheet	
	53547	A	025-097		1 OF 1	